



CF COMMUNITY
FOUNDATION
SOUTHWEST LOUISIANA

ANNUAL REPORT 2020

Connecting people who care with causes that matter.

Julie Miller, Chair
First Federal Bank of LA

Sara Judson, President and CEO
Community Foundation Southwest Louisiana

Marshall Simien Jr., Vice Chair
Simien Law Firm

Prissy Gayle, Secretary
Third Circuit Court of Appeal,
Attorney at Law

Jim Rock, Treasurer
Executive Director,
Lake Area Industry Alliance

Jon Manns, Past Chair
Axiall, Retired

Larry Avery
Big Easy Foods

Lee Boyer
Stockwell Sievert Law Firm, Retired

Karen Chamberlain
Community Volunteer

Clair Marceaux
Director, Cameron Parish Port,
Harbor & Terminal District

Willie Mount
Former Mayor and State Senator

Glenn Pumpelly
Reladyne, Retired

Susan Scalfi
Community Volunteer

Tom Shearman
American Press Publisher, Retired

Katie Stream
Community Volunteer

Our Community Foundation connects people who care with causes that matter. In 2020 we had no shortage of causes, and thankfully, an overwhelming number of people connected with us to respond in a year filled with previously unimaginable challenges.

One year ago, early in the pandemic, we were mobilizing to identify the most critical needs for our communities. We had no idea that just a few months later, two hurricanes would strike Southwest Louisiana. Today, months after those storms, our community remains immersed in recovery and rebuilding. We are fortunate to have people, companies and organizations that recognized the causes that matter most during this time and worked with us to address them. Generosity, compassion and partnership all describe our experiences at the Community Foundation of Southwest Louisiana for the year 2020.

Over 4,000 individual and corporate donors have generously contributed over \$7 million to the Community Foundation for the Hurricane Relief and Recovery Fund. We have granted over \$2.5 million since the first week after Hurricane Laura for relief and recovery work to key nonprofits. Your generosity provides for rebuilding of homes, mental health counseling, restocking of food pantries and other services providing hope for Southwest Louisiana.

In addition to hurricane recovery, David Filo, a Moss Bluff native and co-founder of Yahoo!, and his wife Angela donated \$2.5 million for the Community Foundation to steward a master planning process for Calcasieu and Cameron parishes. We are dedicated to engaging our community leaders, stakeholders and citizens with world class master planners to create and implement a plan that makes a positive, lasting impact for Southwest Louisiana.

We have a Community Foundation in Southwest Louisiana because of people like you. By making an annual contribution for your membership in the Foundation, you are supporting our leadership of civic projects like hurricane recovery and master planning for the future. Opening a fund to invest your charitable dollars allows us to work together to maximize our impact on local communities. We are grateful for our current members and fund holders for your continued support, allowing your Community Foundation to enhance the quality of life now and for future generations.

If you are not already part of the Community Foundation, now is the time to join us by becoming an annual member, creating a charitable fund or getting involved in making a project become a reality. Help us connect people who care with causes that matter!

Sincerely,



Julie Miller

Julie Miller
Chairman of the Board



Sara McLeod Judson

Sara McLeod Judson
President and CEO



Who We Are

The Community Foundation Southwest connects people who care with causes that matter while enhancing the quality of life in Southwest Louisiana.



Partners in Parks Program

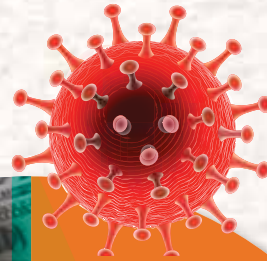
Connecting in 2020 THE YEAR IN REVIEW



College Scholarship Applications Open



Nonprofits Create Reserve Funds



Emergency Relief Fund Receives Donations for COVID-19 Response



Virtual Training Provided to Help Area Nonprofits Cope with Change



Hurricane Relief and Recovery Fund Receives Donations from Around the World



End of Year Giving in Honor of Friends and Loved Ones for Holiday Gifts



Annual Membership Contributions

Workforce Training Scholarships & Seminars Continue at SOWELA & ABC School



Grants to Area Nonprofits to Help Them Survive

Workforce Training Supports New Course for Certified Medical Assistants at **SOWELA**

Nonprofit Assistance for Hurricane Relief



New Donor Advised Funds and Corporate Advised Funds Opened



Better Block Creates Momentum on Nellie Lucher Parkway



Endowment Fund Created to Support Area Nonprofit

Nonprofits Respond to the Pandemic



\$2.5M Donation Received for Master Planning in SWLA



Grants to Local and National Organizations for Rebuilding SWLA



Work Begins on Acadian Ambulance Regional Training Facility



COLOR KEY

- CIVIC INITIATIVES
- FOUNDATION FUNDS
- COVID-19 RESPONSE
- HURRICANE RESPONSE
- MASTER PLANNING

Connecting People who Care with Causes that Matter in a Global Pandemic

COVID-19 RESPONSE

In March 2020, the impact of the COVID-19 pandemic became the cause that mattered most. In response, the Community Foundation of Southwest Louisiana established the Emergency Relief Fund to assist with operational or program needs of nonprofit organizations serving the region. With donations of nearly \$300,000, the Foundation granted directly to 37 area nonprofits impacted by COVID-19, enabling them to continue vital services, especially as they support vulnerable communities and communities who have been disproportionately impacted by the pandemic. These organizations provide a wide variety of services including healthcare, housing, legal, animal rescue, and arts & culture.



Cameron Council on Aging



Foundation staff donates blood



Second Harvest Food Bank distribution center in Cameron Parish

“The last year proved to be an obstacle course in many ways for individuals and organizations alike. Aligned with our mission to serve, strengthen and sustain the community, this virtual training series equipped organizations with the tools necessary to succeed and further serve our community.”

~ Nealie Hale, President, Junior League Lake Charles

Food Insecurity

Additional grants focused on the increased food insecurity by assisting numerous food pantries across Southwest Louisiana directly and through Second Harvest Food Bank.

Nonprofit organizations develop new ways to function at full capacity during and after disasters.



Project Build a Future used their grant to enable their organization to work remotely, by purchasing laptops, a tablet, a Zoom subscription for virtual meetings and a cybersecurity policy to ensure protection of clients' information.



The Girl Scouts of Louisiana- Pines to the Gulf used their grant to purchase personal protective equipment (PPE) for 36 staff members, as well as plexiglass shields for their retail shop locations. The funding also helped with program supplies for virtual camp experiences.



Member of Daisy Girl Scout Troop 540 helping with hurricane relief

“My daughter participated in the G.I.R.Ls Rule the Galaxy virtual summer camp. She absolutely loved it! In a time where my daughter had limited access to friends and travel opportunities, I am truly thankful to the Girl Scouts for offering this summer opportunity.”

~ Parent of a Girl Scout

“As a former board chair of the Community Foundation, I gained a new perspective on the importance of being clear and definitive on expectations of future board members.”

~ Jon Manns, Immediate Past Chair, Community Foundation of SWLA

Connecting & Collaborating Virtually

The Foundation partnered with the Alliance for Positive Growth (APG) and the Junior League of Lake Charles, Inc. to provide two virtual training series to help local businesses and nonprofits navigate and thrive in this new normal. More than 80 individuals from organizations supporting a variety of missions across Southwest Louisiana participated.

- Faith Hooks, Executive Director of APG, trained business and nonprofit executives on how to host a virtual meeting successfully, using Zoom and Poll Everywhere platforms.
- The JLLC hosted a virtual training series led by Beverly Brooks Thompson, PhD, CFRE, to help nonprofits in Southwest Louisiana hone their fundraising skills.



Foundation Board Meeting via Zoom

Connecting People who Care with Causes that Matter in Response to Two Hurricanes

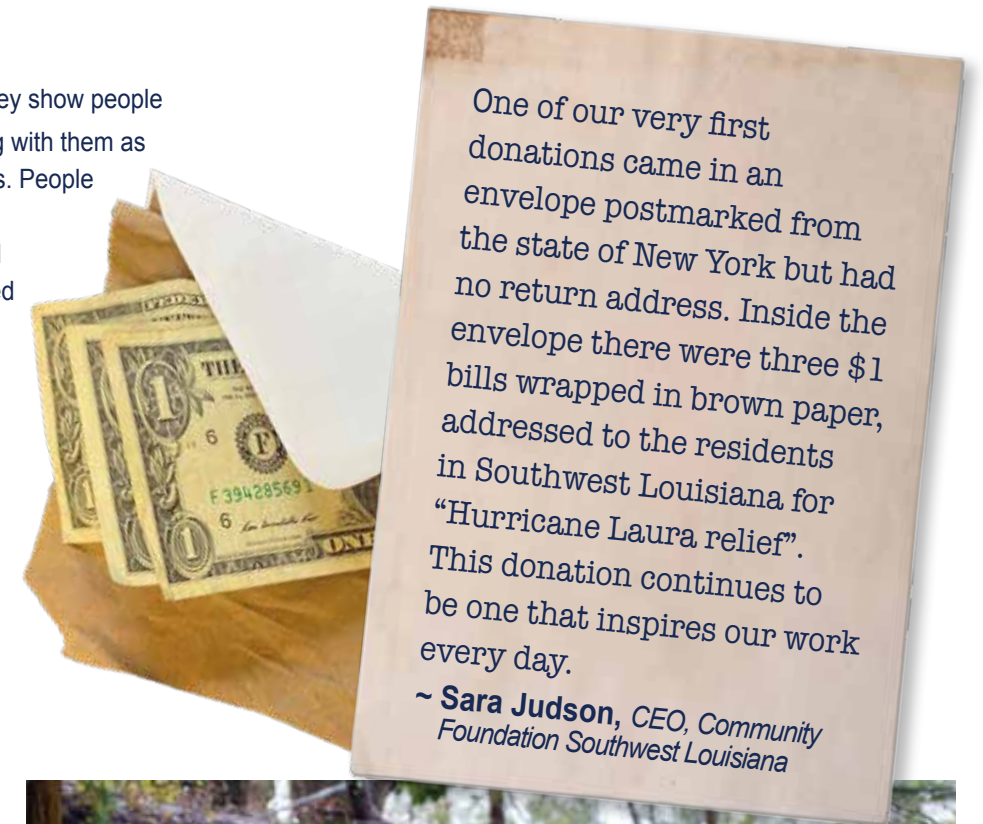
HURRICANES LAURA AND DELTA

What benefit does a community foundation create after a natural disaster? In our case, over **\$7 million from around the country and world has been received for the Hurricane Relief and Recovery Fund since it opened the night before Hurricane Laura's landfall.** The very next week, the Foundation gave grants to support organizations providing immediate relief and recovery

for the people and communities in the storm's path. In 2020, we **granted over \$2.2 million to over 70 nonprofits** providing services including food, water, debris removal, mucking and gutting, mental health, animal rescue and other pressing needs. Looking to the future, we are focusing on rebuilding a more resilient Southwest Louisiana.

Connected to the Cause

Donations are more than a gift to recovery; they show people who are hurting that many others are standing with them as they rebuild their homes, businesses and lives. People from around the world have donated what is meaningful to them, from \$1 to \$1 million, and everything in between. Individuals have offered up proceeds from art raffles, jewelry sales, boutique purchases and personal fundraisers to come to our aid. Donor Advised Funds from the Community Foundation network across the United States allocated funding our way. It all supports the recovery and rebuilding of Southwest Louisiana.

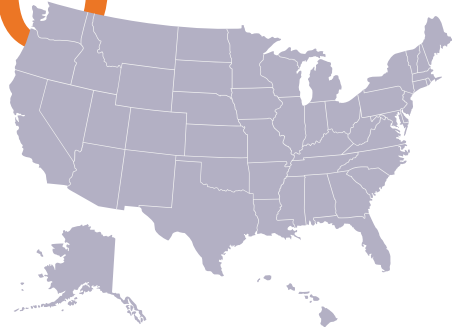


One of our very first donations came in an envelope postmarked from the state of New York but had no return address. Inside the envelope there were three \$1 bills wrapped in brown paper, addressed to the residents in Southwest Louisiana for "Hurricane Laura relief". This donation continues to be one that inspires our work every day.
 ~ Sara Judson, CEO, Community Foundation Southwest Louisiana

Hurricane Relief By the Numbers

Donations from all

50 states



People from

10 different countries donated

Over

4,000 contributions from people, companies & organizations

72 grants to non-profits



\$2.2 million granted in 2020 for hurricane relief



"With Hurricane Laura approaching one of our first calls was to Sara and the Community Foundation. Once the impact of the storm became clear, we made a \$1 million commitment to their Hurricane Relief and Recovery Fund on top of more than \$4 million in other donations in support of hurricane relief for SWLA."

Michael Tipton, President, BCBS Louisiana Foundation

Ongoing Relief & Recovery

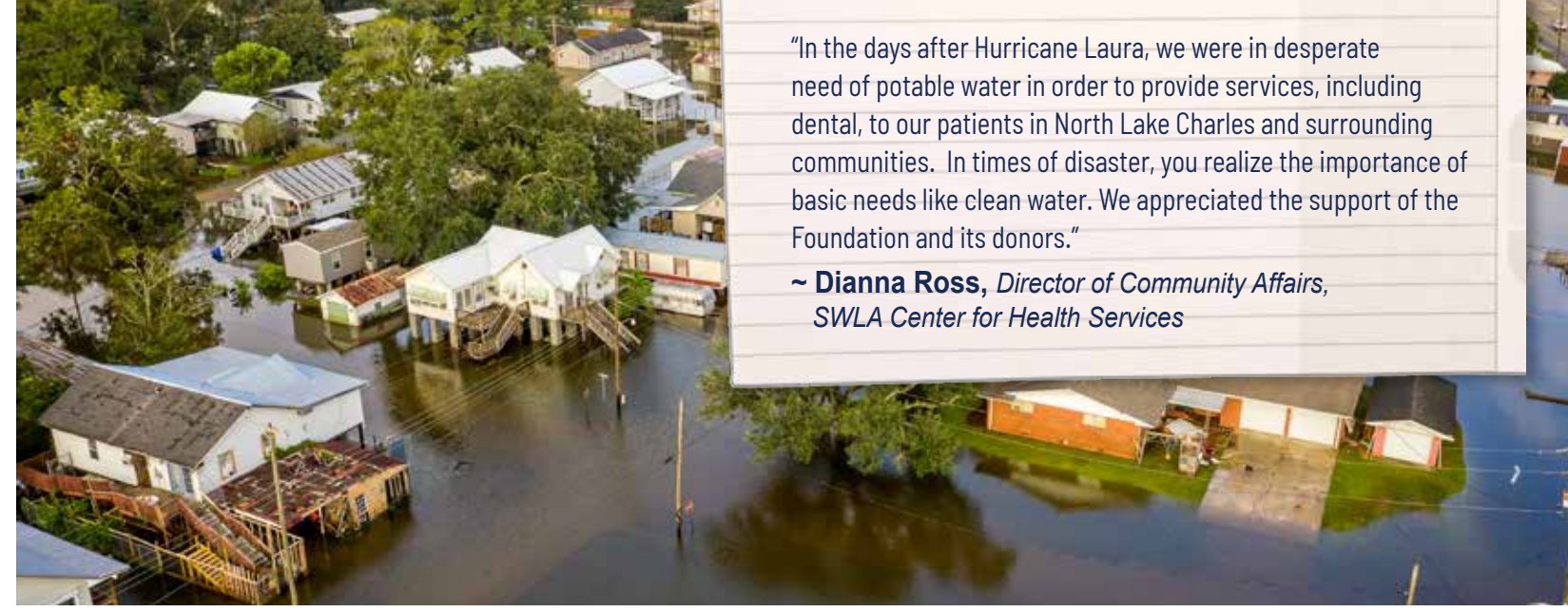
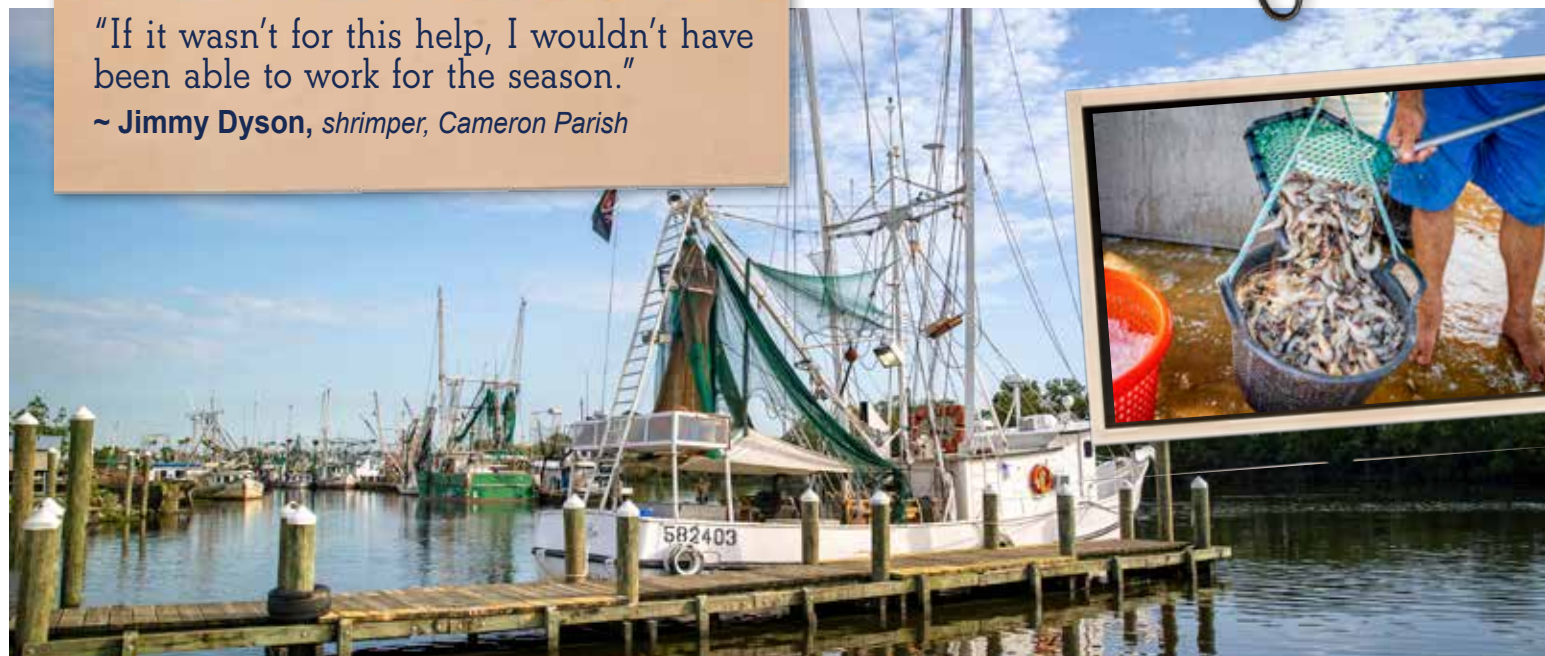
Shrimping is a way of life for many in Cameron Parish, and 40 percent of the nation's shrimp is harvested by Louisiana shrimpers. When a storm is coming, shrimpers in Cameron Parish normally bring their boats farther north for safe-keeping and dock at the Port of Lake Charles. Unfortunately, the boats were not saved from severe damage by Hurricane Laura. In September 2020, the Foundation granted \$60,000 to the Iberia Development Foundation who assisted shrimpers with boat repairs.



“The speed of the success that happened from the funds being granted to assist the shrimpers was something I’ve never seen in my entire career.”

~ **Clair Marceaux**, Port Director, Cameron Parish Port

“If it wasn’t for this help, I wouldn’t have been able to work for the season.”
~ **Jimmy Dyson**, shrimper, Cameron Parish



“In the days after Hurricane Laura, we were in desperate need of potable water in order to provide services, including dental, to our patients in North Lake Charles and surrounding communities. In times of disaster, you realize the importance of basic needs like clean water. We appreciated the support of the Foundation and its donors.”
~ **Dianna Ross**, Director of Community Affairs, SWLA Center for Health Services

Operation Hope: Recovery for North Lake Charles is an organization created with the help of a grant from the Foundation to provide recovery and repair assistance in the wake of Hurricanes Laura and Delta.



Catholic Charities of SWLA remained open and active, serving the community. They delivered pallets of necessities and gave hotel vouchers to residents whose homes suffered damage. The organization continues to work closely with food banks across all parishes in Southwest Louisiana.



Compassion Kind is a global humanitarian and animal welfare organization. Their team came to the SWLA area from Tampa Bay, Florida, to work with Lake Charles Pitbull Rescue to assist animal rescue and care needs.



Care Help of Sulphur passed out 300,000 pounds of food in the week following Hurricane Laura, with the assistance of dedicated members of the National Guard, who were hosted by the Care Help staff.



The Highland Mennonite Church of DeRidder was among the recipients of the first round of grants. The church members actively removed trees and debris from homes in the DeRidder area, many times without being asked to do so.



“We are overjoyed and relieved that the Community Foundation has stepped in to continue this vital assistance for hurricane impacted small businesses that need quick funding to return to operations through the Pathway to Small Business Recovery program. With this new avenue of funding, we are now able to extend the scope of this grant to include entrepreneurs in all five parishes within Southwest Louisiana: Allen, Beauregard, Calcasieu, Cameron & Jeff Davis.”
~ **George Swift**, George Swift, President/CEO, SWLA Economic Development Alliance & Chamber

Connecting People who Care with Causes that Matter for a Positive, Lasting Impact

CIVIC INITIATIVES

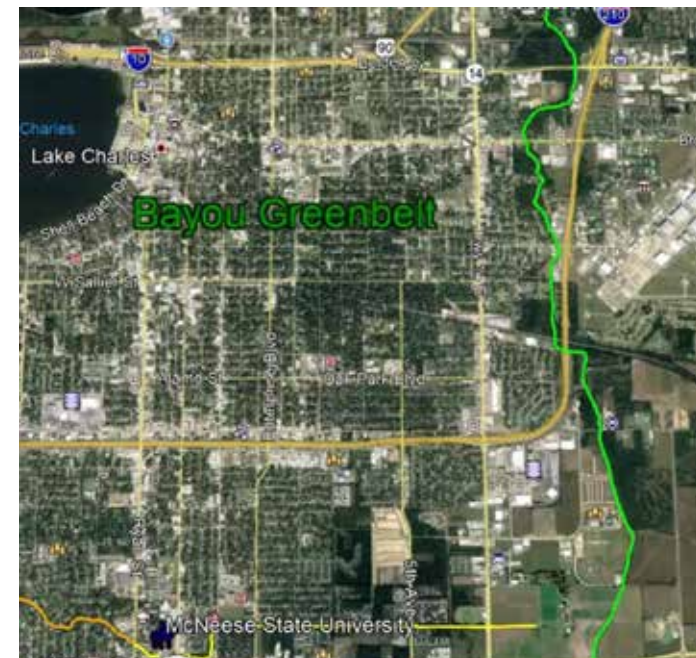


Better Block - Nellie Lutcher Cultural District

One of our goals as a Community Foundation is partnering with the City of Lake Charles to enhance economic opportunities along Interstate 10. The Nellie Lutcher Better Block demonstration was held in November of 2019 to bring the community together and identify which enhancements would make the most significant positive impact in the area.

A survey of participants revealed an overwhelming response with a desire for economic development and quality of life enhancements. Developments creating a positive trajectory already include:

- Adaptive reuse of the Dimmick Auto Supply building by Acadian Ambulance to serve as their Regional Training Center and Administrative Office. This facility brings in at least 80 people each business day, including some 24/7, creating a demand for a variety of services.
- City Park honoring Nellie Lutcher announced by the City of Lake Charles, providing green space and public art for the neighborhood to enjoy.
- Murals painted during Better Block are inspiring other murals and forms of streetscaping.



Bayou Greenbelt

Bayou Greenbelt is a vision from Mike Nodier, co-owner of Polaris Engineering and an outdoor enthusiast. The concept would connect three waterways around the Lake Charles area: English Bayou, Kayouchee Coulee, and Contraband Bayou. If it becomes a reality, it will enhance the quality of life through improved drainage, recreation on the water and the addition of walking and biking paths.



Better Block project



Murals now enhance the Nellie Lutcher Parkway

"My wife and I have been connected with the Foundation for years as annual members and through our family's Donor Advised Fund. Now, a project I've had on the drawing board for several years has the potential to become a reality. Their encouragement and support of the Bayou Greenbelt project is exciting."

~ Mike Nodier, Co-Owner, Polaris Engineering

Workforce Training

More than 300 residents in Southwest Louisiana have received job skills, career counseling and improved career opportunities through the Workforce Training Scholarship Program. Primarily focused on industrial jobs like welding, electrical and pipefitting, that have been in high demand with area plant expansions, the program pivoted in 2020 to focus some of the scholarships on healthcare. The Foundation provided scholarships to students in the newly created Certified Medical Assistant (CMA) course at SOWELA.



The Workforce Training Scholarship Program is supported by donations from local businesses, initially Sasol and Shell, as well as individual contributions from \$1,000+. Want to get involved? Contact the Foundation to learn more on becoming a donor, mentor or committee member.

"I'm pleased to see my students' confidence levels grow because of their newfound technical and people skills. The career coaching and interview preparation provided is preparing them to be successful in their new careers."

~ Catherine Jordan, CMA Instructor, SOWELA

Connecting Your Passion with a Purpose

CHARITABLE FUNDS

Do you have a cause that is important to you? We can be your partner in philanthropy and help you take on the challenge of changing your world by taking the first step—opening a charitable fund. Not sure what a charitable fund is? Think of it as a savings account for doing good. With a charitable fund, you can make grants to qualified nonprofits anywhere in the world. Join others in our Community Foundation who have granted over \$20.3 million to support causes that matter in Southwest Louisiana and beyond.

Funds By the Numbers

\$4,427,519 2020 grants

10.25%
2020 return on investment

\$30,713,028
2020 total assets

113
2020 total funds

\$20,376,248
Total grants (2008 - 2020)

"Over the last few years, our friends Karen Chamberlain and Nicole Miller have introduced us to the many facets of the Community Foundation. Realizing our shared commitment to a strong SWLA, Southside Machine Works, Inc. became a Partner in Progress member in 2020. At the same time, our family opened the Jarreau Family Fund, a donor advised fund that puts us on our path of a long term giving plan. It did not take us long to see what a true gem SWLA has in the Community Foundation."

~ **Christi & Joey Jarreau**



Hurricane recovery in action

YOUR MEMBERSHIP MATTERS

Our work is driven by people, companies and civic partners that join in our vision of making a positive, lasting impact in Southwest Louisiana. We offer community-minded citizens a way to collectively address our region's most pressing challenges and greatest opportunities. Our programs and initiatives inspire ideas and ignite action for maximum community impact.

As members, people and businesses contribute resources that let the Foundation staff take on projects for all people to enjoy.

Through our members' generosity, we've been able to build parks, plan for bike paths, raise money to recover from storms, partner to plant trees that will provide shade for future generations and more. Members provide the fuel for philanthropy across our communities—every donation makes a difference! Be a part of bringing civic leadership projects to life by becoming an annual member.



"Everyone is passionate about something. The Foundation can connect your passion with the people and organizations that will turn your vision into a positive impact for our community. I'm pleased to make annual membership contributions to the Community Foundation and ask you to join me as a member."

~ **Willie Mount**, former Mayor of Lake Charles and Louisiana State Senator

"Our team of financial advisors with Oak Grove Wealth Partners is a proud new Corporate Member of the Community Foundation. We value their local knowledge and ability to connect people who care with causes that matter in Southwest Louisiana and beyond. We were impressed with their immediate and strategic approach to hurricane relief and recovery so we decided to honor our clients with a donation to this fund for Christmas 2020."

~ **Stephen Liles, J.D., CFP**, Oak Grove Wealth Partners

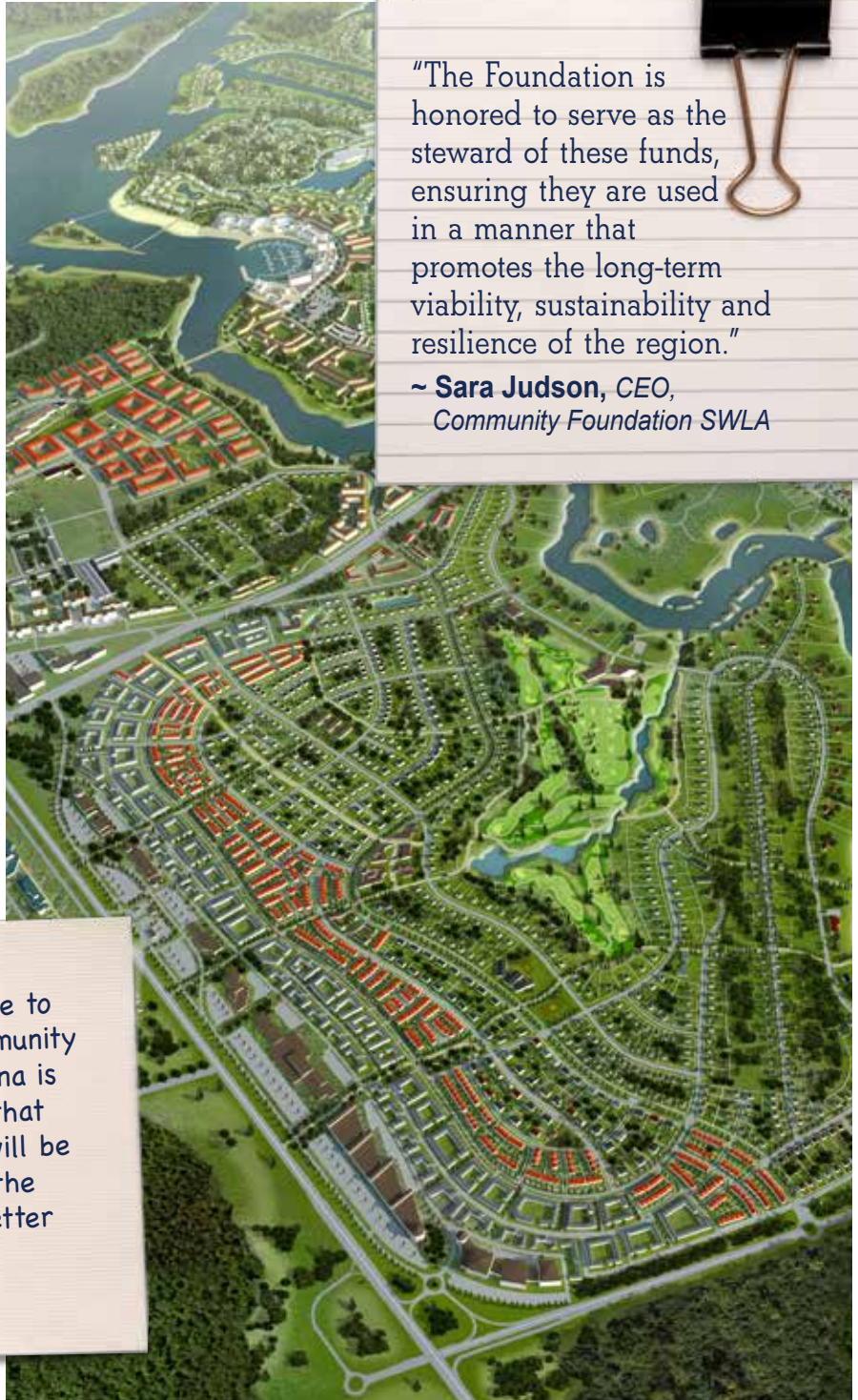
Connecting SWLA's Vision for the Future

RESILIENCE MASTER PLANNING

The Foundation is honored to have received a significant contribution of \$2.5M to facilitate a comprehensive master plan for Calcasieu and Cameron parishes. This donation from Angela and David Filo creates an opportunity to infuse Hurricane Laura and Delta recovery efforts, already underway in our cities and parishes, with a comprehensive vision of what our broader region could look like over the next 30+ years. These plans will have the opportunity to leverage and enhance the assets connecting our five parishes.

Why the Community Foundation?

- As a regional Community Foundation focused on connecting people who care with causes that matter, the Foundation's role and guiding principle will be to facilitate this process in a manner that is inclusive, transparent, and collaborative throughout.
- We are approaching this vision-setting and planning effort with expert assistance and, more importantly, input from our elected officials, stakeholders, and residents. All types of stakeholders will be welcome and necessary to participate in this process, as we work together to think about what the future of our region should look like when it comes to areas such as:
 - housing, economic development, infrastructure
 - water - how we interact with and manage water- from flood risk to the long-term impacts of coastal land loss
- All parishes and communities of Southwest Louisiana will benefit from the scalability of the multiple elements within the plan.



"The Foundation is honored to serve as the steward of these funds, ensuring they are used in a manner that promotes the long-term viability, sustainability and resilience of the region."

~ **Sara Judson, CEO,**
Community Foundation SWLA

"Our family is grateful to be able to support the work that the Community Foundation of Southwest Louisiana is leading. This is an organization that knows its community and that will be here for the long-haul helping the Lake Charles area build back better and more resilient."

~ **David Filo, Co-founder, Yahoo!**